

# RSP200 Reticle Pod Openers

[www.h-square.com](http://www.h-square.com)

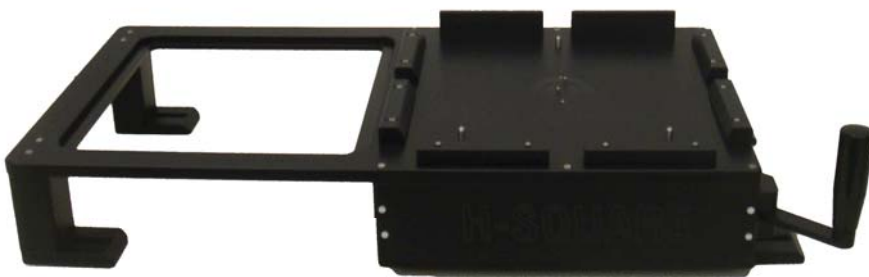
**H-SQUARE**  
CORPORATION



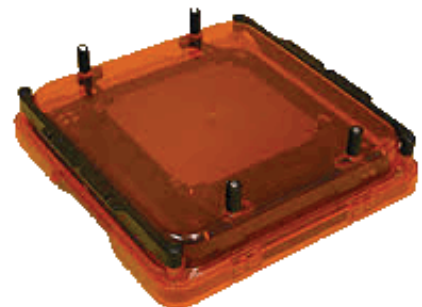
## SMIFMAN8

### SMIFMAN8 200mm Manual Reticle SMIF Pod Opener

Tabletop manual swing arm pod opener provides clean, easy access to photomasks in any RSP200 reticle storage single-mask pod cassettes (or 200mm wafer SMIF Pod unit). The SMIFMAN8 allows the operator to manually open the center mechanism on the pod to release the lid and gain access to the inner mask tray. H-Square's design features a clean storage area for the lid to be stored while pod is open. Class 1 Cleanroom compatible. ESD protection insured by static dissipative plastics.



15.5" (393mm) WIDE x 10.8" (274mm) DEEP



3100 Patrick Henry Drive Santa Clara, California, United States 95054 [info@h-square.com](mailto:info@h-square.com) +1 408 982 9108

© 2016 H-Square Corporation 16 151